

SUSAN BEE / In and Around BC: Paintings/Drawings/
Sculpture



Susan Bee, *British Columbia*, 1973

Oil on canvas, 34" x 20"



Susan Bee, *Girl With Angel*, 1973

Ink on paper, 10.25" x 8.25"



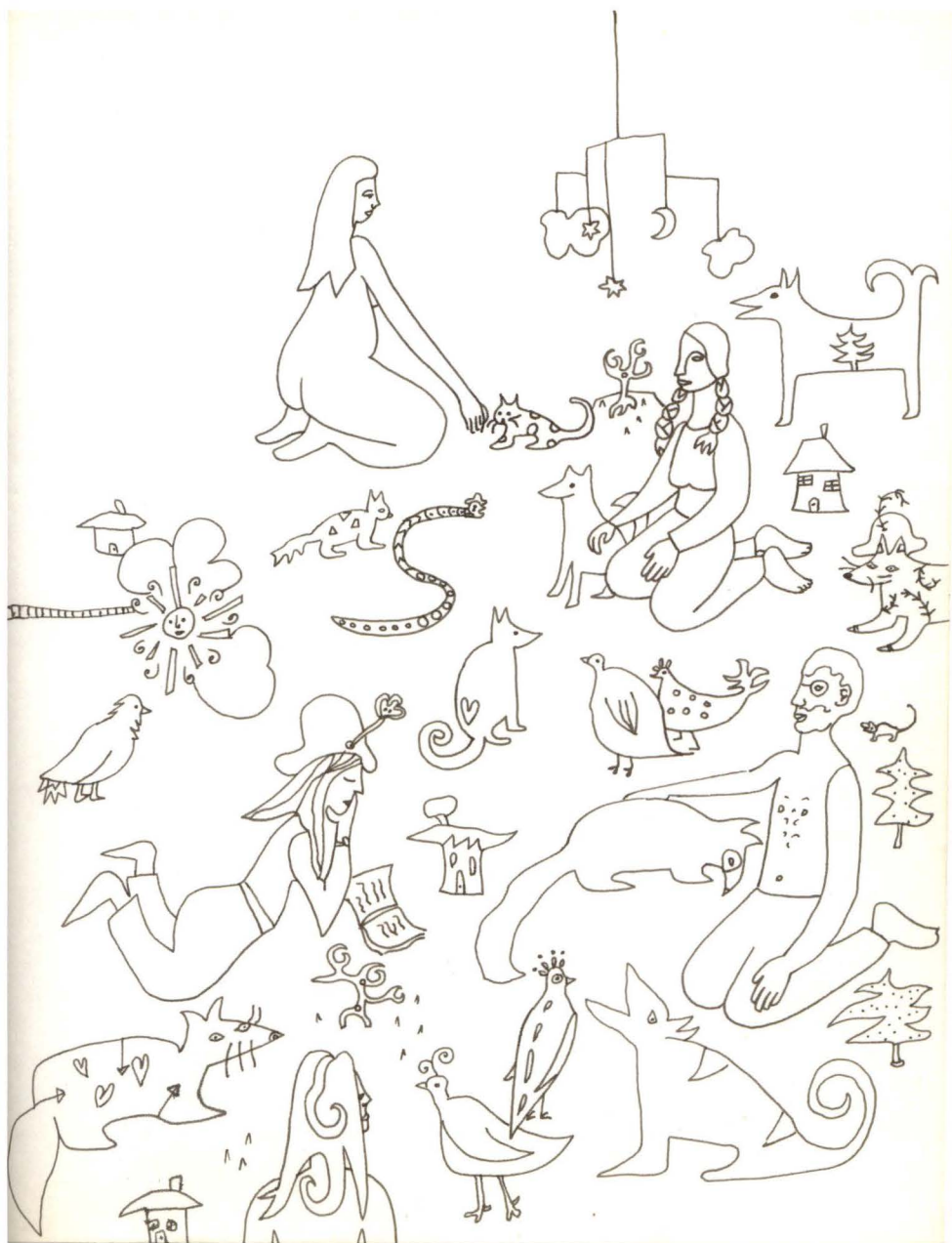
Susan Bee, *BC Landscape*, 1973

Ink on paper, 10.25" x 8.25"



Susan Bee, *House with Window*, 1973

Ink on paper, 10.25" x 8.25"



Susan Bee, *Mobile and Scene*, 1973

Ink on paper, 10.25" x 8.25"

JOHNNY JUNE

A hopeless dreamer who engaged
endlessly in thoughts beyond his own recollection
woke up one day and started to build a house.



Not a large house, he thought, not a
very large house or else I won't be able
to finish it. Perhaps a house of medium build

though certainly it should^{not} be of too wild a
grandeur or too colorful a gate or else it
will attract too much attention. It would

be nice no doubt all right if I could build
it free for all my senses and then bright
pink and blue blue brown would make a
face all smiles and tears and even make

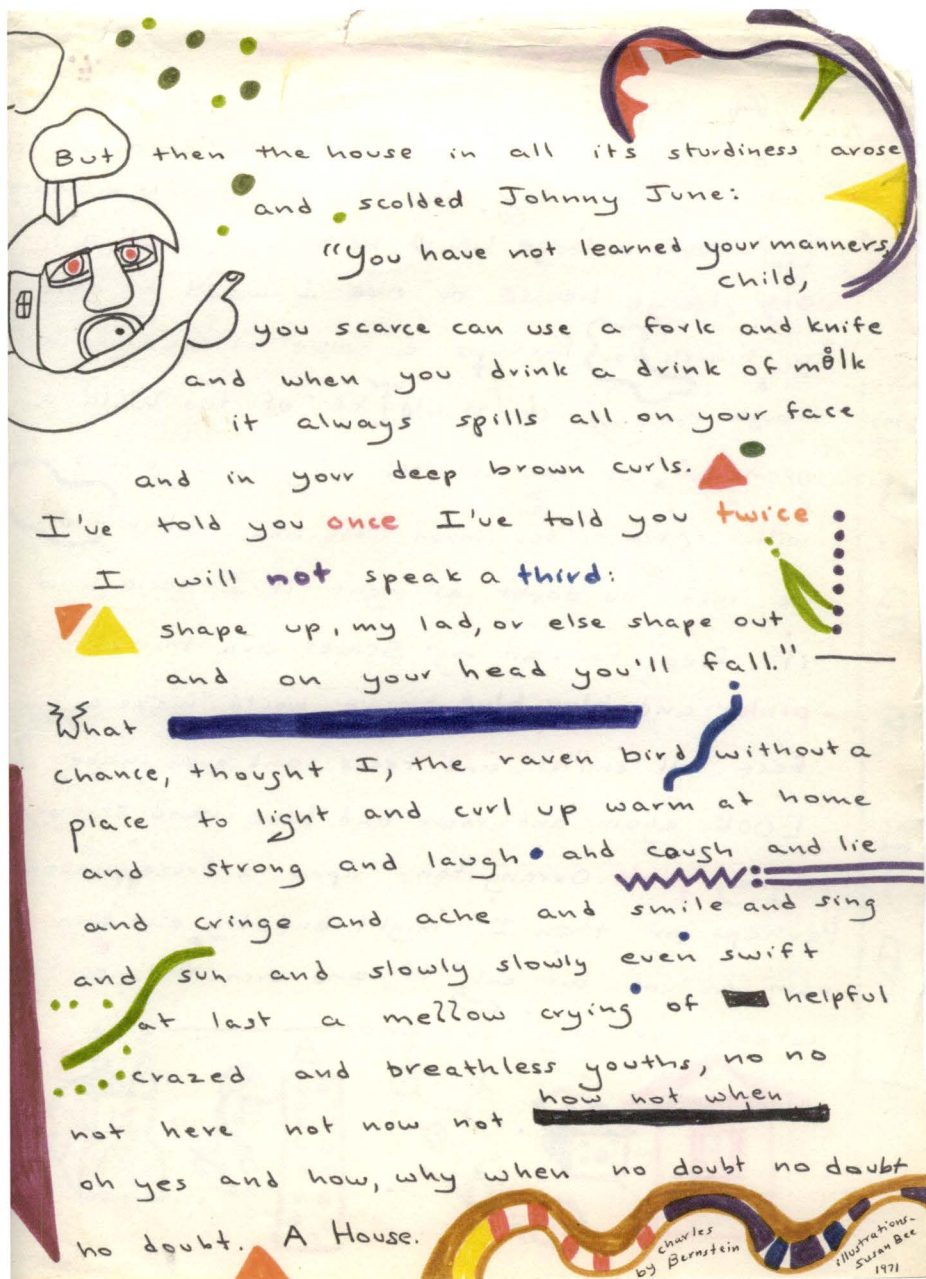


LOOK again and more and blue and strange
gray pink Orangutans upon a frozen moon.
Perhaps or then I might and try and even
rain a tune but only if and even then or
where or why or who.



Susan Bee and Charles Bernstein, *Johnny June*, 1971

Marker on two-sided paper, 12" x 8.5"



But then the house in all its sturdiness arose
and scolded Johnny June:

"You have not learned your manners,
child,

you scarce can use a fork and knife
and when you drink a drink of milk
it always spills all on your face
and in your deep brown curls.

I've told you **once** I've told you **twice**

I will **not** speak a **third**:

shape up, my lad, or else shape out
and on your head you'll fall."

What

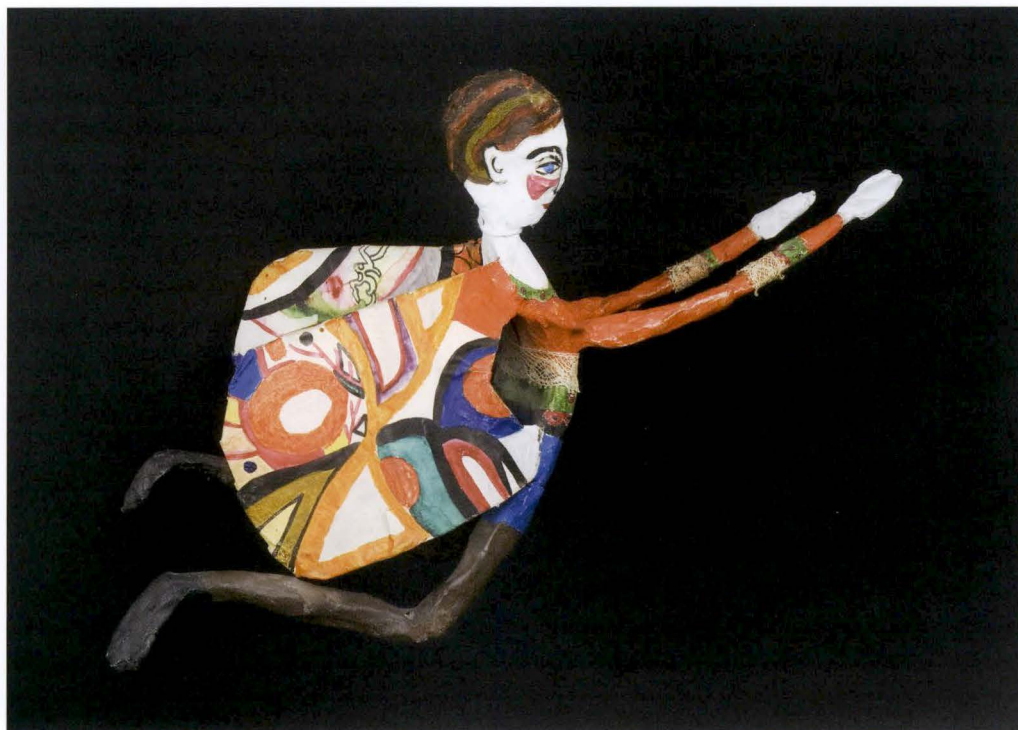
chance, thought I, the raven bird without a
place to light and curl up warm at home
and strong and laugh and catch and lie
and cringe and ache and smile and sing
and sun and slowly slowly even swift
at last a mellow crying of helpful

crazed and breathless youths, no no
not here not now not how not when

oh yes and how, why when no doubt no doubt
no doubt. A House.

Charles
by Bernstein

Illustrations-
Susan Bee
1971



Susan Bee, *Angel #2*, 1973

Mixed media on papier mâché, 12" x 6" x 5.5"

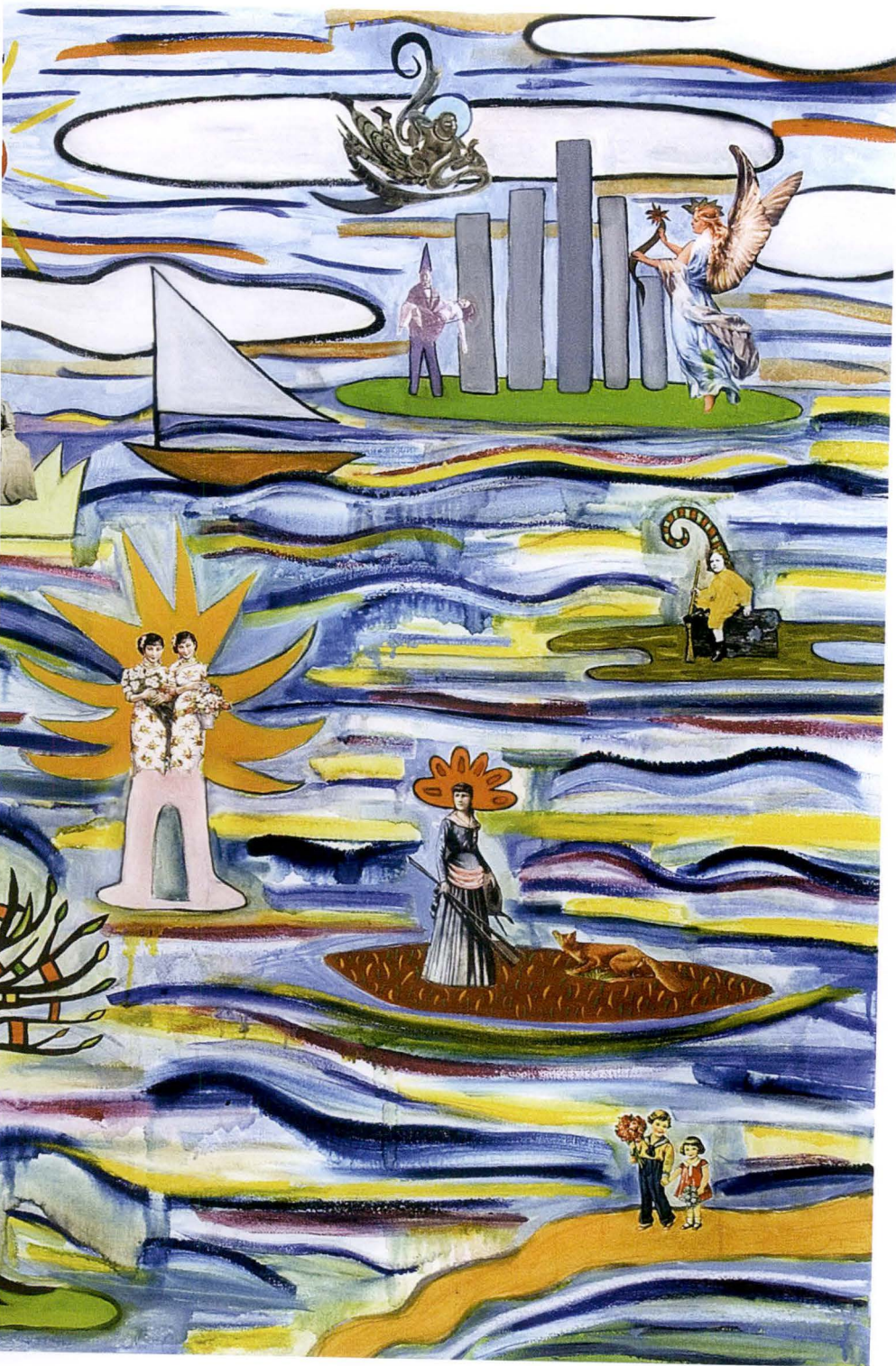


Susan Bee, *Charles*, 1972

Oil and collage on canvas, 44" x 38"



Susan Bee, *Harbor of Illusions*, 2009
Oil and collage on linen, 37" x 50"





Susan Bee, *Ruskin*, 2010
Oil on linen, 30" x 28"