

Lina Delano / BURNT OFFERINGS

*Tell the truth, but tell it slant.*  
— Emily Dickinson

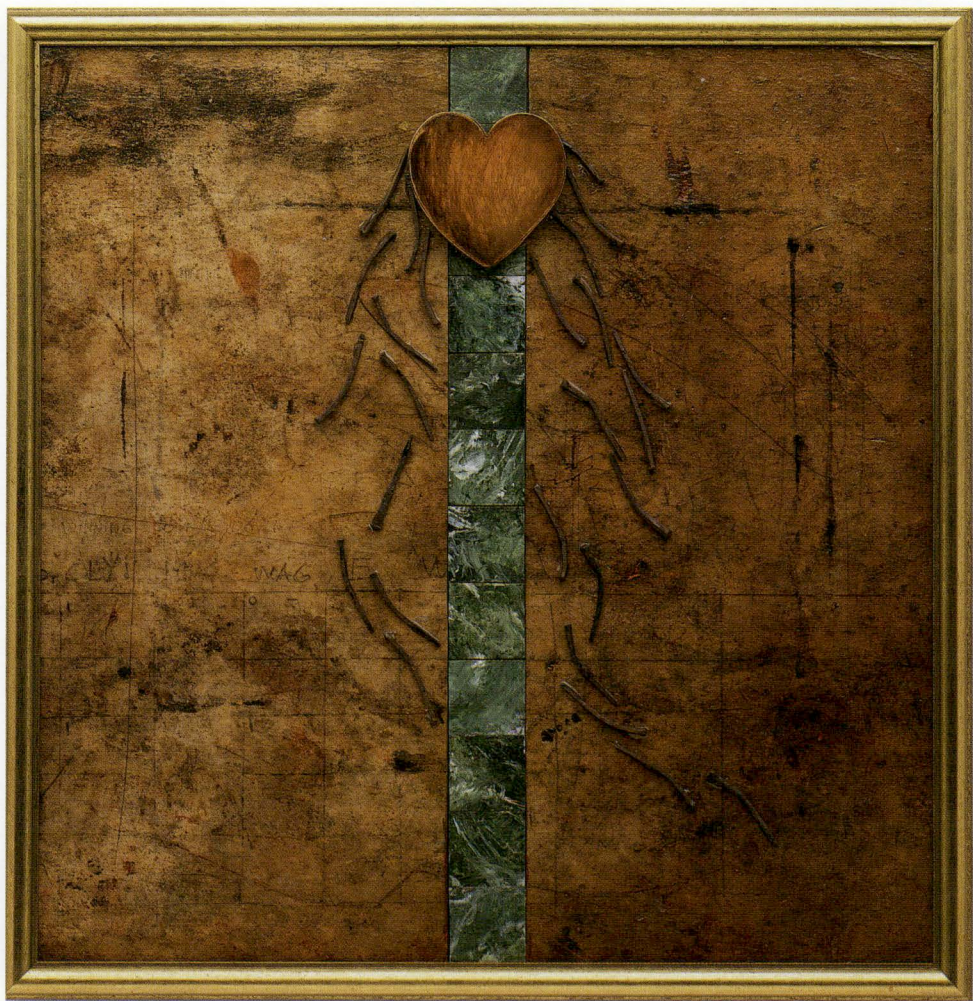
## ARTIST'S STATEMENT

This body of work focuses on Joan of Arc with references to Isis, Eurydice and other foolish hearts. It is intentionally ambiguous, characterized by subtle shifts in meaning. Some objects are mysterious, their original purpose lost or forgotten — assembled from relics, souvenirs and artifacts, anything which is the material evidence of life and time.

Nostalgia has no place in their selection; rather, I see them only as potential emissaries for my purpose. They are fragments washed up by the sea of time, physical entities to be freshly charged with a new significance. And so these objects take on a different meaning as they become part of the whole to express a repertoire of human emotion, by turns ironic, comic or lyric and, at the same time, both classical and deeply romantic.



Burnt Offering



Her Heart Did Not Burn



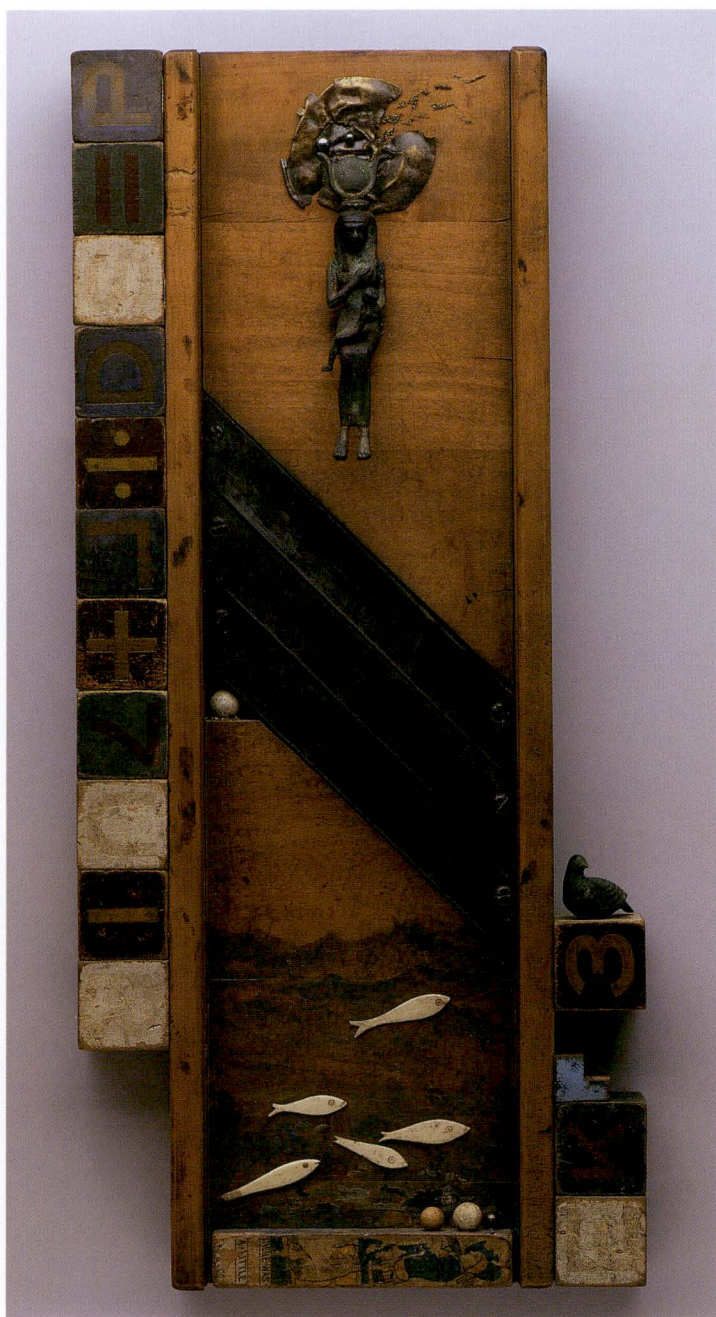
Hi, this is Eurydice. Orpheus isn't here right now, but if you'd care  
to leave a message I'll see that it gets to voice mail Hell.



The Bride



Martyr



Isis



Goddess of the World



Saint