

SUPPLIANTS

(The Sacred Way)



A Collaboration by
Christos Dikeakos and Colin Browne

Myrtle, grapevine, olive





CPR Railyards and Foundry, Longueuil, Québec



Court House & War Memorial, Chatham, New Brunswick

Dog grass, flower of Olen, anenome





Our Lady of Tears, Cornerbrook, Newfoundland

Poplar, willow, pine, oak

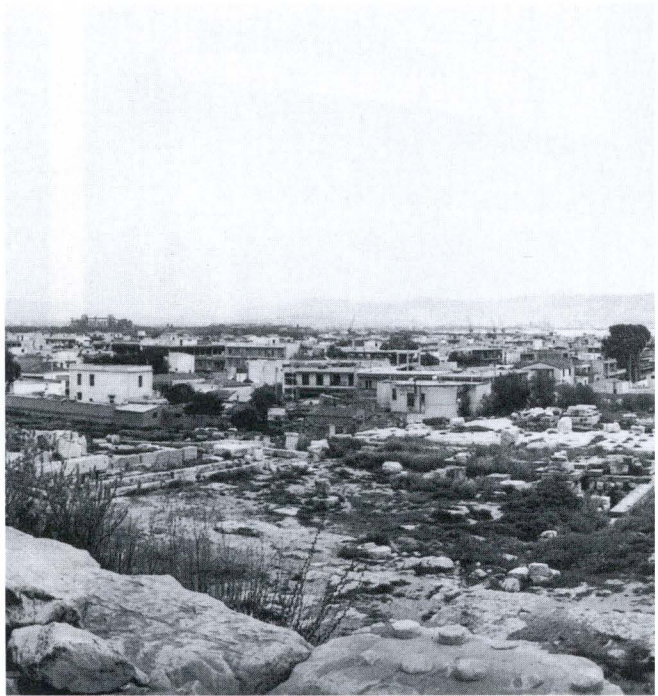


Osier, laurel, myrtle, tamarisk, palm





Shoe district, Ottawa, Ontario



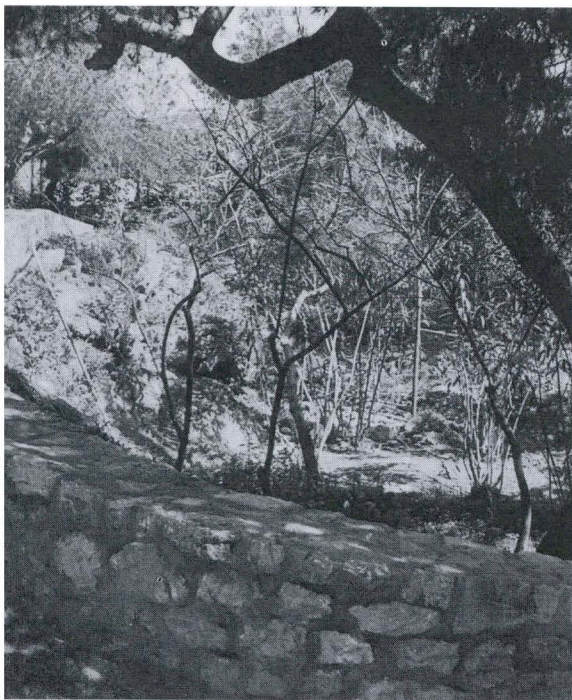
Lookout, near Halifax, Nova Scotia

Poppy, bay, corn, barley



Rose-laurel, olive, wild vine, narcissus, crocus





Public Gardens, Brandon, Manitoba



Schoolyard, Lloydminster, Saskatchewan

Olive, elm, plane



Rose, lotus, myrtle, poppy, violet, apple





Lover's Lane, Bridgewater, Nova Scotia

Narcissus





Hell's Gate, British Columbia

Sites and Place Names, Athens

Photographs by Christos Dikeakos.

1. The Hephaisteion: The Sacred Way
2. Altar of Ares
3. Roman Philosophical School and Sanctuary of the Nymphs
4. Metropolitan Street near Hermes Street, Athens
5. Elysian Fields
6. Garden of the Furies, Colonus
7. The Academy of Plato
8. Sanctuary of Eros and Aphrodite
9. Sanctuary of Pluto, Eleusis

Details from Photograph of the Ship's Company of the *HMCS Mayflower*

Photographer unknown.