

Margaret Witzsche / RECENT WORKS

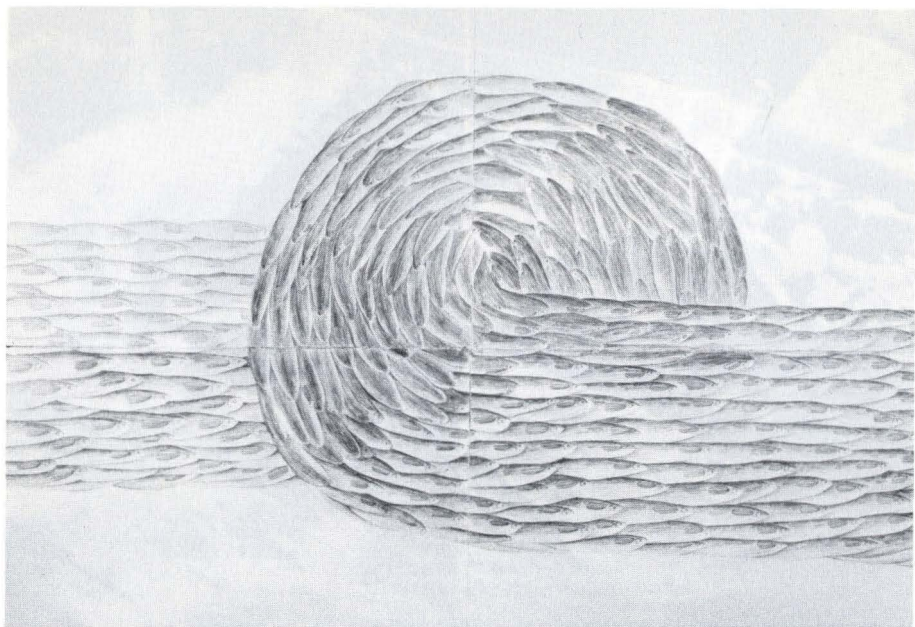
The white of the river
is possibly the last white
the pure, wet white.

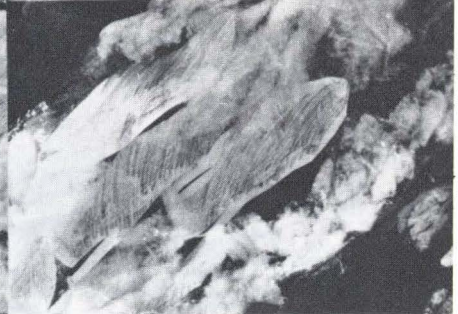
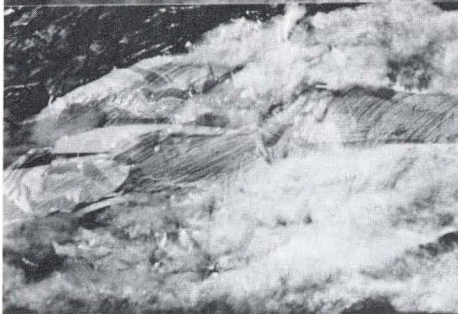
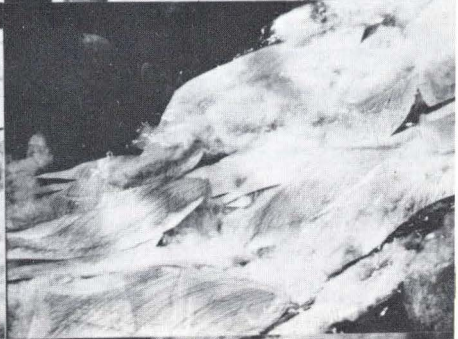
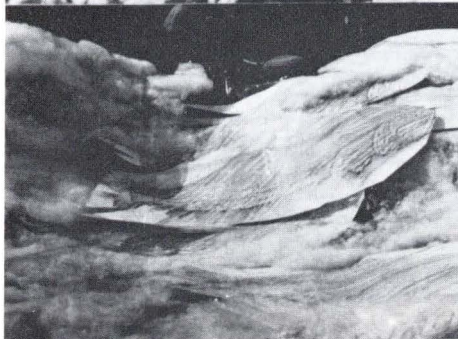
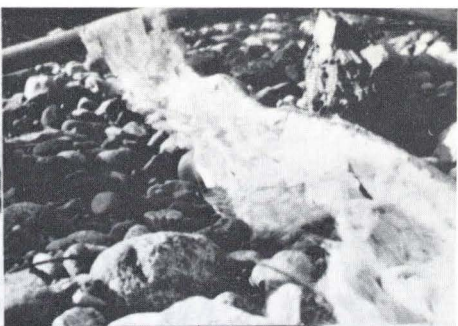
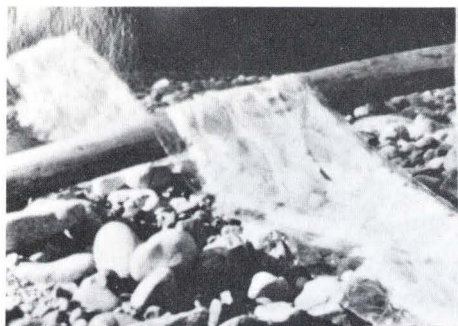
You lie on your front on a flat stone
and the spray cleaves
the back of your eyes
where the lustral flame reddens.
(any oil is vapour)
(the water is vapourized, a soup)

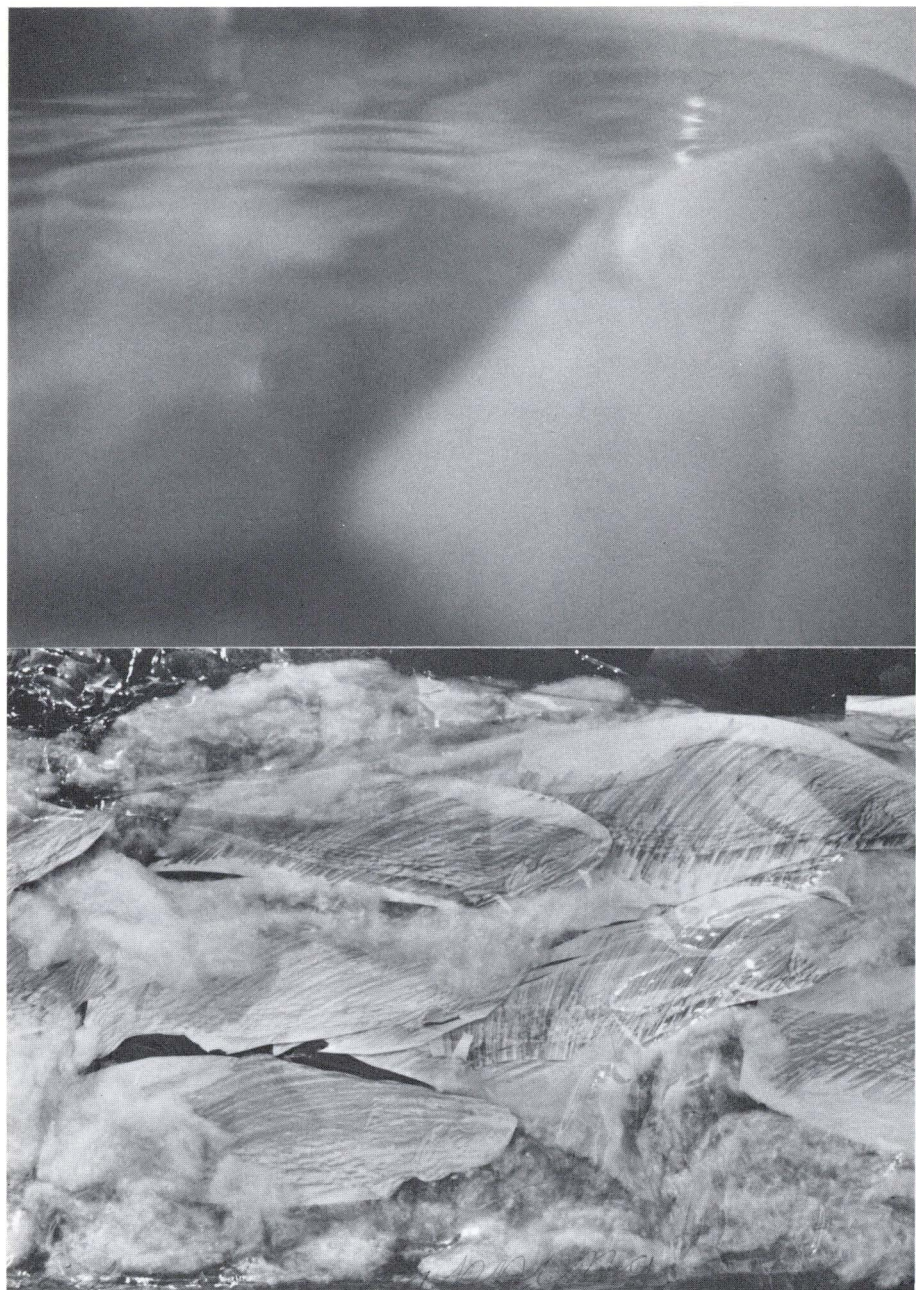
rattle the stones under the river-water with your hands
make your hands separate
from the glossy edges of your brain
put that part of you into the water
let it speak with fish
cling to the mucous sides of fish
to the thin line.
Let fish understand it.

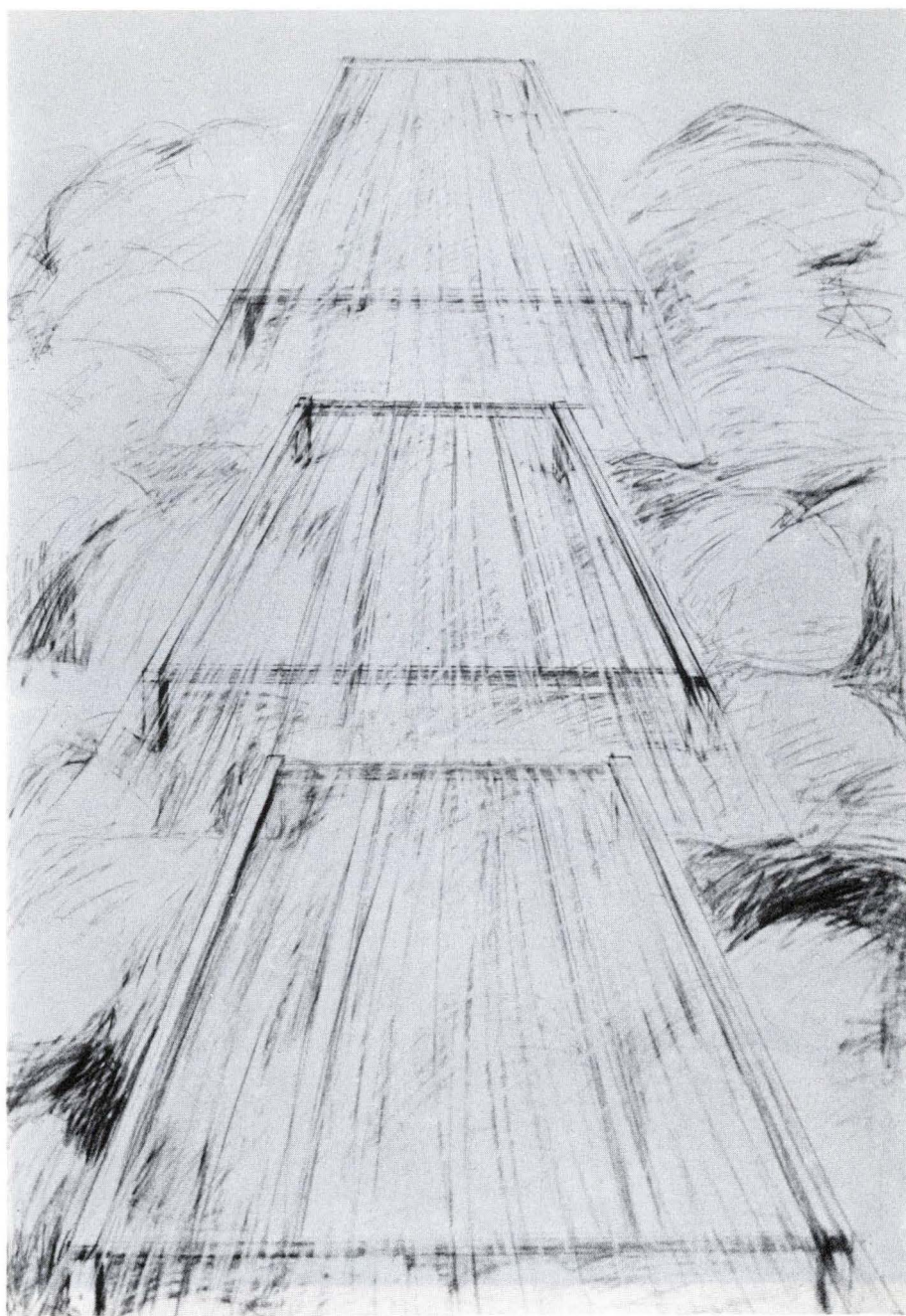
Someday, maybe the white of rivers will flume over-land
to where the water is thick and grey.
You will be there on your stone
your hands will be rainbows
your arms and your eyes, the agate-white of mourning.

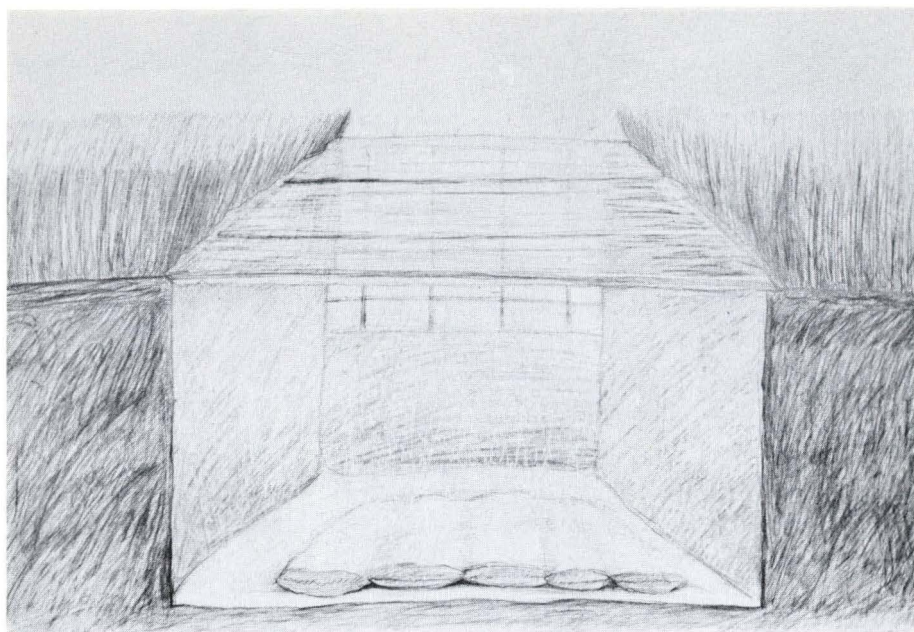
MARGARET WITZSCHE

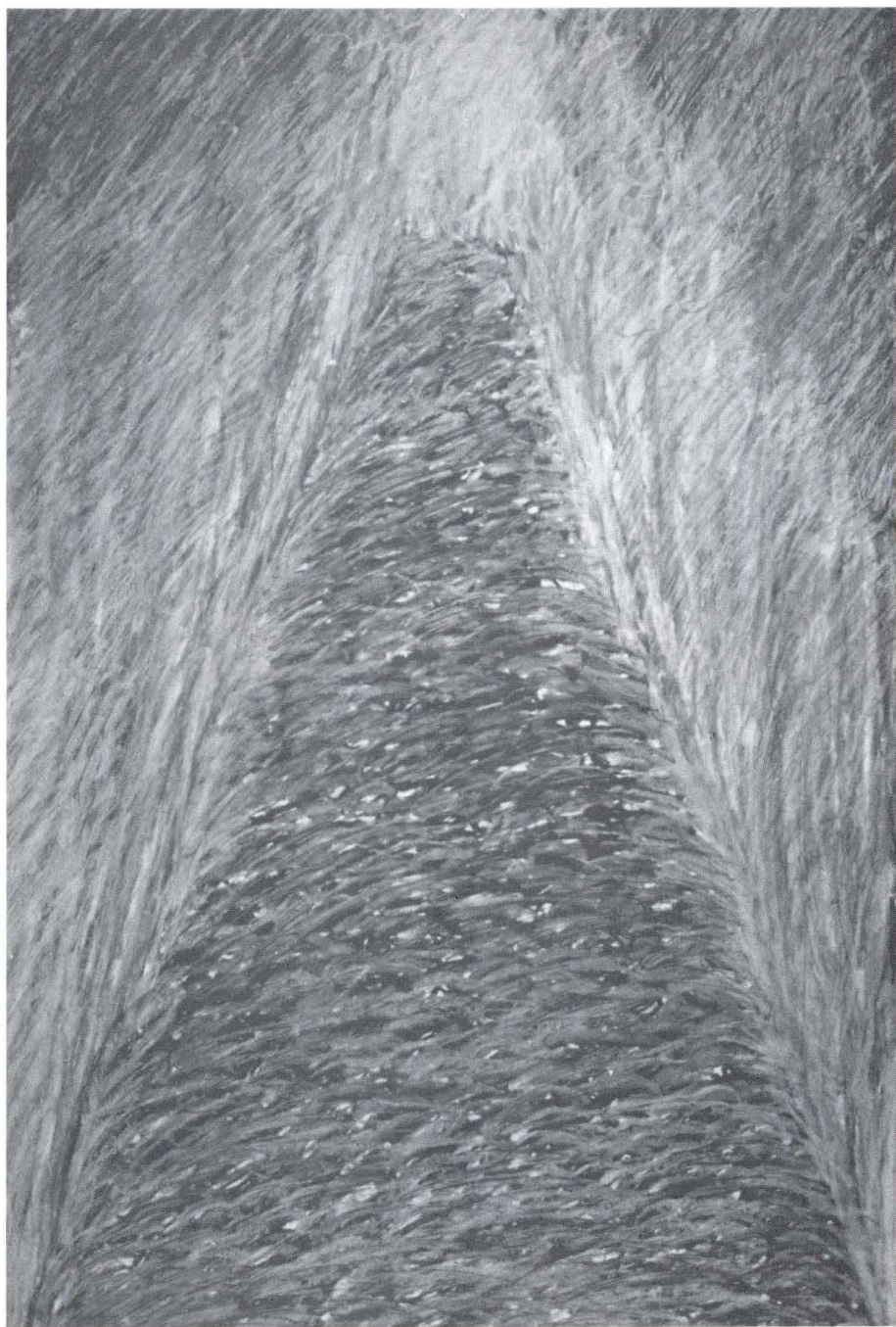












SURVIVAL DEVICE

The edges of this house
fraught with tangled vines and showy panes
tear at the last sweetness of her form.
(She loves it, the enclosing, frail structure.)

In her other house
she lived with flames
which cursed and billowed
put sparks like black stars on her flesh

The new home is many sided, close fitting.
It endears her,
holds her safe, lets her see outside.
She moves within her house
from wall to wall, sometimes
holds her hands against her face.
She watches new, pale flames issue into the atmosphere,
into the vines
the sweet, graceful world.

MARGARET WITZSCHE

IMAGES

PAGE

- 39 *The Cry of the Fishes Caught in Eddies*, 1983, pencil, crayon and graphite, 44" x 60".
- 39 *Fish Dreaming of Stars*, 1985, etching and relief, 22" x 30".
- 40 *River III*, 1987, Kodachrome prints of plastic river and graphite fish taken at Lynn Creek, 5" x 4".
- 41 *River IV*, 1987, Kodachrome prints, 5" x 7"; cartoon for a larger work.
- 42 *Fish Ladder*, 1986, graphite on paper, 40" x 26".
- 43 *Possible Greenhouse Effect: Cutaway Section*, 1986, graphite on paper, 26" x 40".
- 43 *Fallout Shelter: Protective/Survival Devices*, 1986, graphite on paper, 26" x 40".
- 44 *Bed I*, 1987, oil stick on paper, 40" x 26".
- 45 *Tent: Igniting/Protecting*, 1986, Kodachrome prints, 5" x "; four of a series of seven.
- 46 *Protective/Survival Devices I*, 1986, Kodachrome prints, 7" x 10"; cartoon for a larger work.
- 46 *Untitled*, 1986, Kodachrome prints, 40" x 43".

All photographs by Margaret Witzsche.