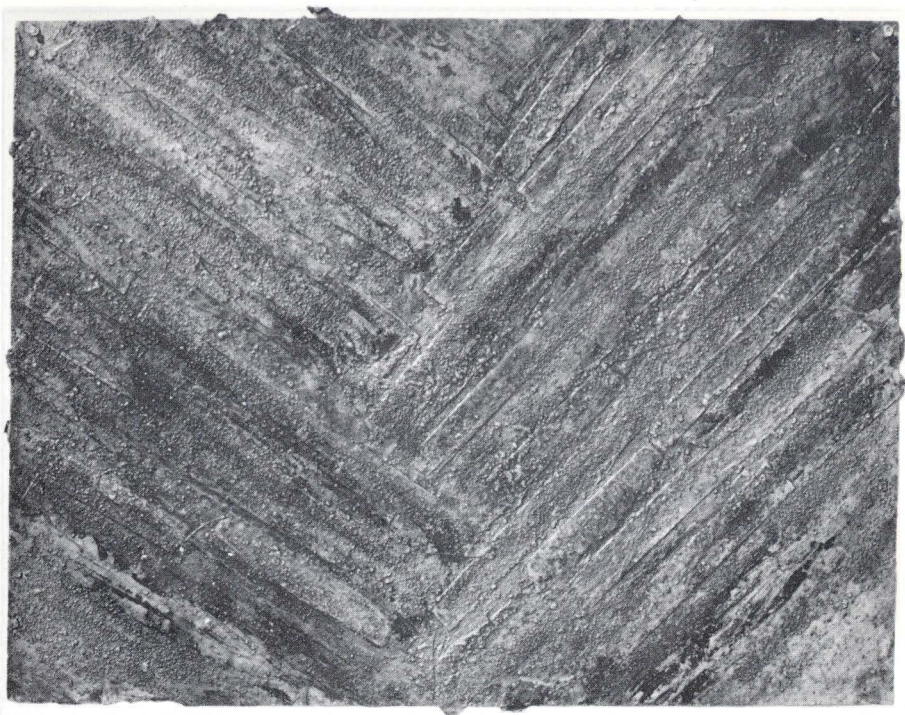


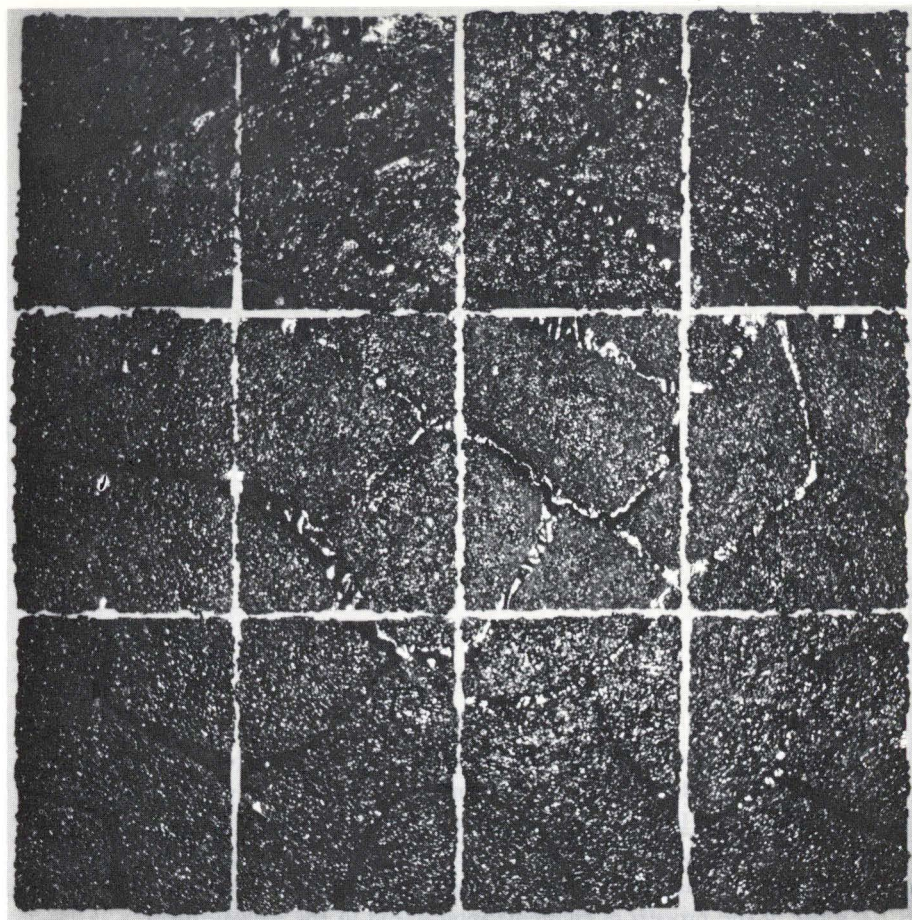
Joan Smith / LANDFORMS



The body of work I have concentrated on the past three years has been inspired by aspects of time and change in the physical environment. I have spent considerable time in mountain landscapes, particularly in the Rockies, where I have experienced a growing fascination in the endless cycles of change. I try to convey a sense of the process of elements interacting in the environment: stratifying, eroding, crumbling, building anew. Although the forms themselves are of interest to me, it is these timeless processes which I find intriguing.

In works such as *Glacier*, *Strata*, *Silt*, and *Lava*, I mix, scrape, pour, mold and layer disparate, and sometimes recycled, elements to simulate specific processes and forms. I try to capture the vastness and universality of the subject matter by using minimal imagery, large textural areas and a scale larger than that of traditional prints. The raw and primitive work of artists such as Antoni Tàpies and the size and enduring nature of some of the contemporary and ancient earth works has inspired me to cross the boundaries of printmaking and painting, and to use materials which are from, or remind me of, the natural environment.

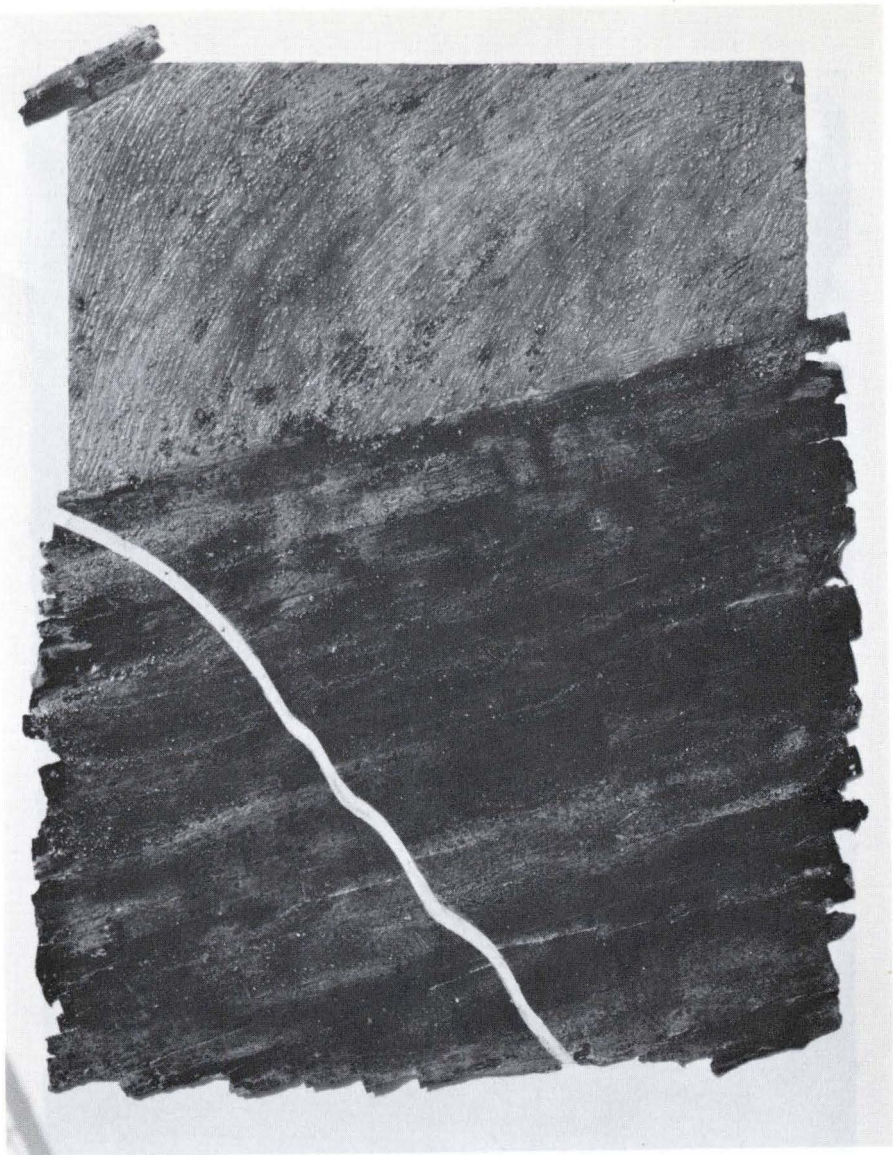
—JOAN SMITH







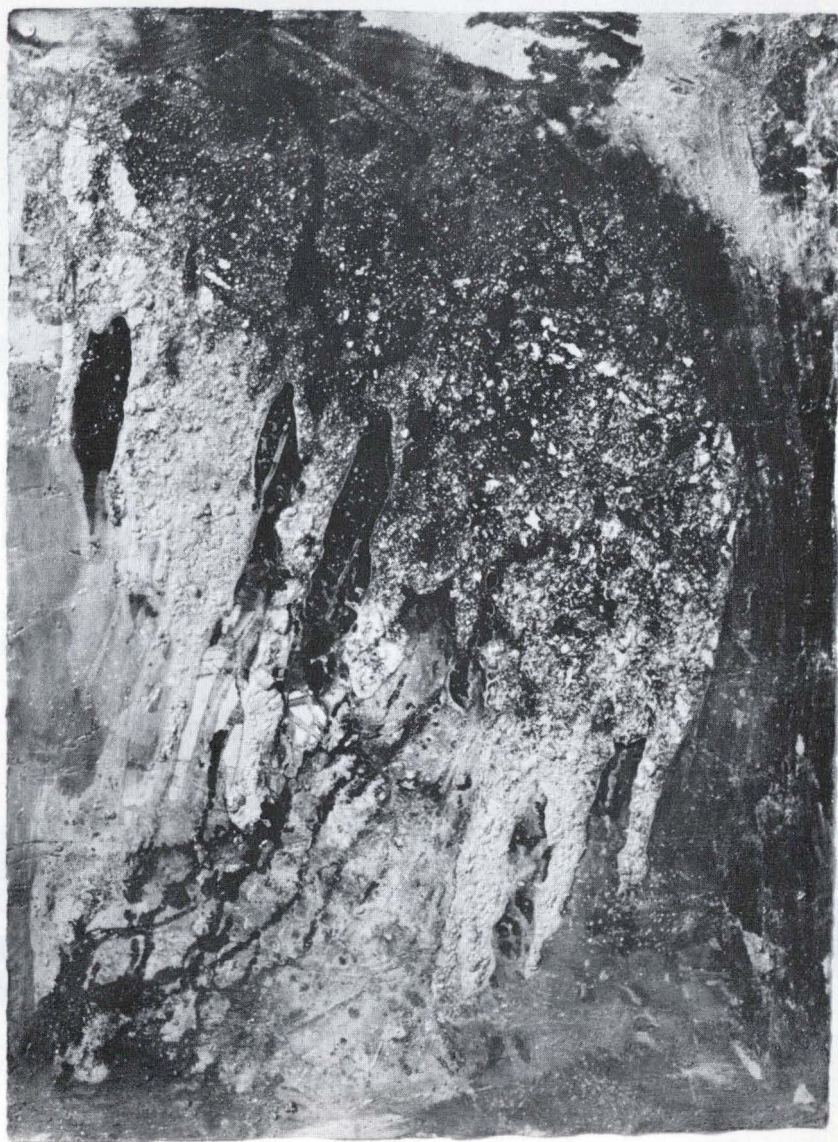






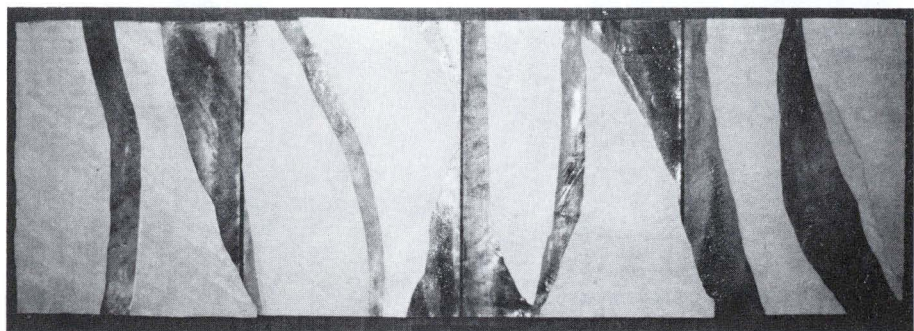




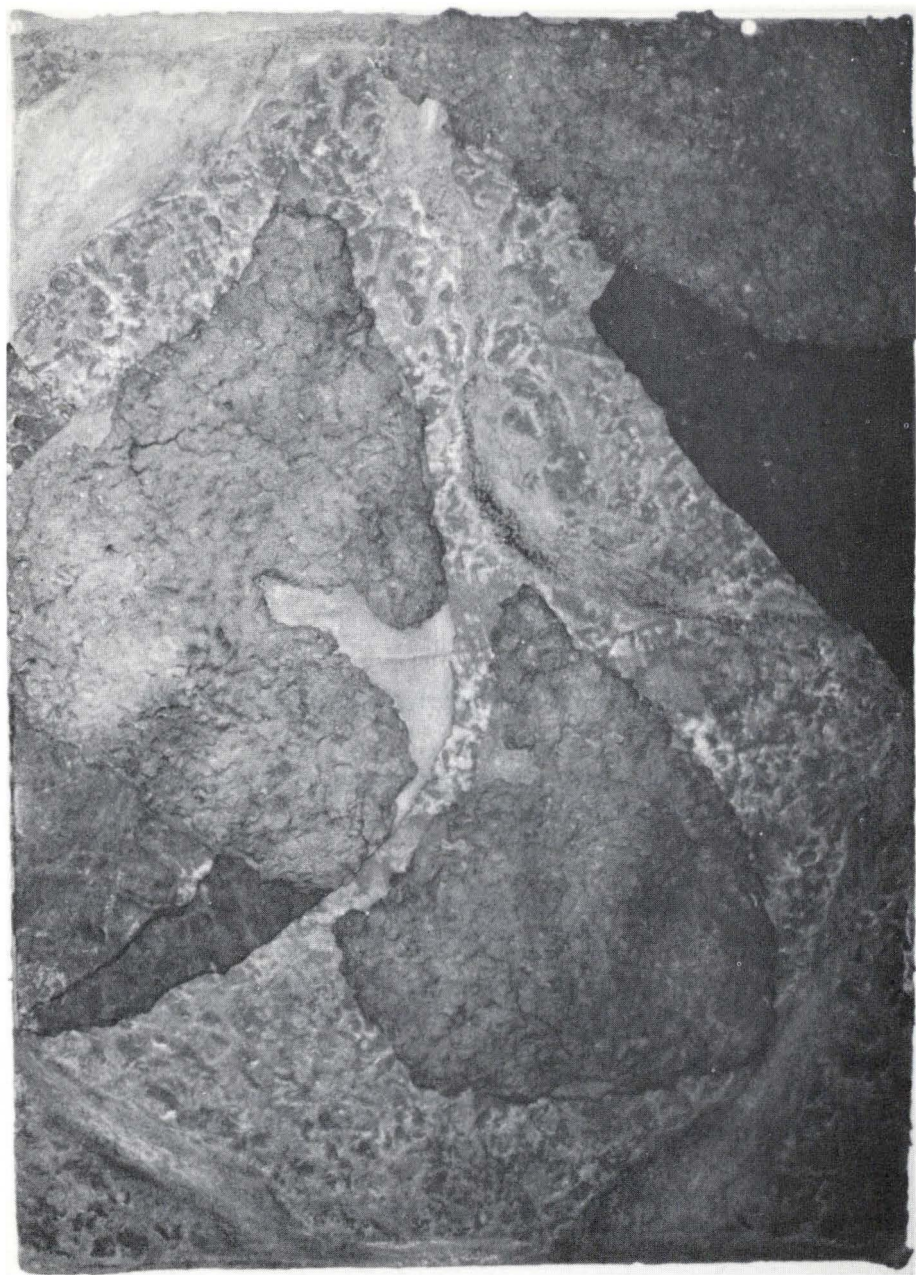












IMAGES

PAGE

- 20 *Strata IV*, 1986, collaged paper, gesso, asphaltum, sand, varnish, 25" x 34".
- 22 *Delta*, 1986, collaged handmade paper, pulp, ink, graphite, gesso, varnish, 90" x 88".
- 23 *Delta* (detail).
- 24-26 *Strata/Blue Line*, 1986, collaged paper, gesso, asphaltum, sand, varnish, 32" x 72" (triptych); 32" x 24" (each panel).
- 27-30 *Silt I*, 1986, collaged print, Pollyfilla, gesso, acrylic paint, sand, asphaltum, varnish, 30" x 120" (polyptych); 30" x 22" (each panel).
- 31-32 *Blue Strata/Red Line*, 1986, collaged paper, gesso, asphaltum, sand, varnish, 32" x 72" (triptych); 32" x 24" (each panel). 2 panels shown.
- 33 *Glacier I*, 1986, collaged collograph print, gesso, acrylic paint, 30" x 88".
- 34-35 *Lava II*, 1987, collograph print and handmade paper collage, 30" x 44" (diptych).

All photographs by Joan Smith.